

Waveguide High Power Circulators

Part Number: KTWC140-40B

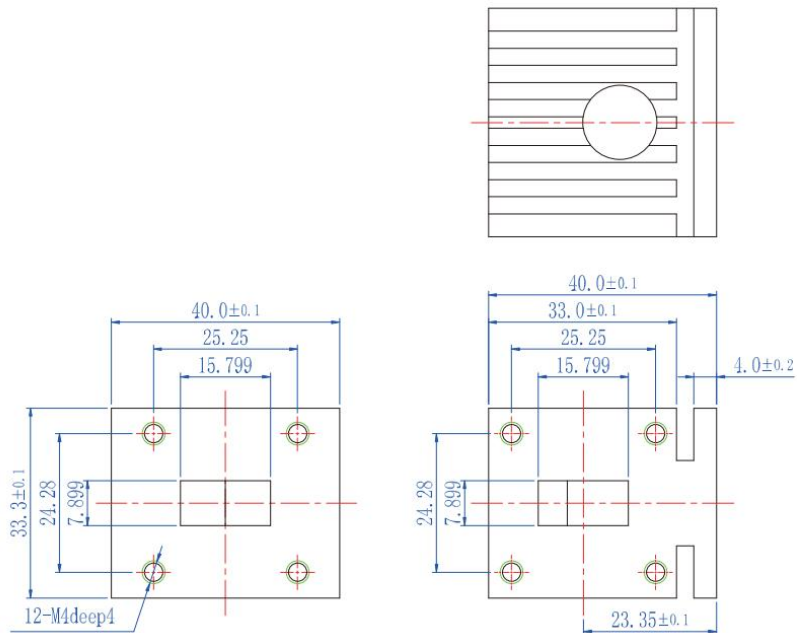
Key Features

- Broad Frequency Range: 11.9GHz-18.0GHz
- High Peak Power: 1000W
- High Isolation, Low Insertion Loss
- Wide Operating Temperature Range: -40°C~+85°C
- Commercial, Military and Space Applications

Electrical Specifications at Room (25°C±5°C) Temperature

Part Number	Freq. Range (GHz)	Relative Bandwidth	Insertion Loss Max. (dB)	Isolation Min. (dB)	VSWR Max.	Peak Power (W)	Duty Ratio	Waveguide Type
KTWC140-40B	11.9 - 18.0	6%	0.3	20	1.20	1000	10%	WR62

Mechanical Dimensions (mm)



HOW TO ORDER

